



ROLAND CUPPERS

What is? This perhaps alienating question characterizes the work of Roland Cuppers. His ability to challenge the viewer, to question himself with geometric surfaces and industrial colors, allows his work to enter into a dialogue with the viewer.



62x62cm

Roland Cupper's work is geometric and abstract. Until you as a viewer accept the challenge of seeing what is objectively there or not: depth, proportion, imagination. The beholder finds his own truth within the tight shapes and colors that characterize the work of Roland Cuppers.



80x122 cm



99x122 cm

What is?

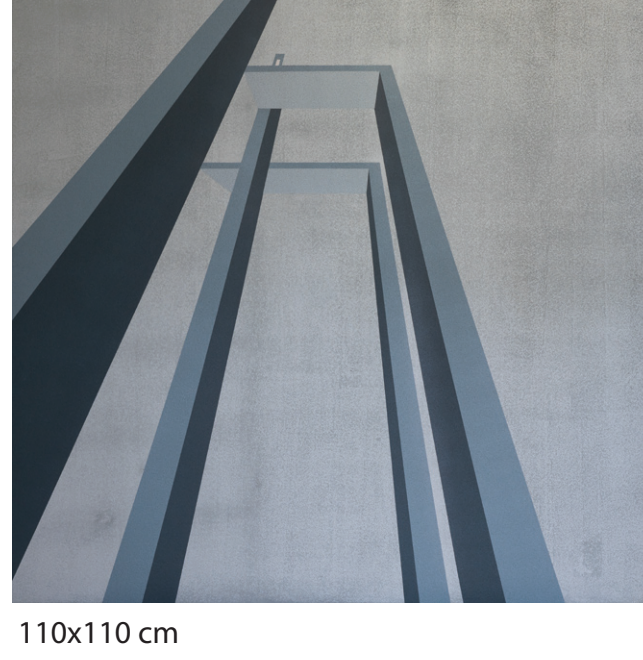
We live in a world surrounded by lots of information: pictures, sounds, texts, knowledge and more.... In this overwhelming amount of information one can get lost easily. Roland Cuppers started his journey to discover the core or essence of his perceptions during his early childhood. His talent to experiment with figure and shape was recognized immediately after entering the Academy of Arts. He graduated 'with honor' because of his unique use of representation, materials and techniques. Following by gaining a stipendium to continue his journey and to further develop his skills. With success!

What did the Academy-teachers discover in his work? They saw a young and upcoming artist who was capable to leave out information and by this creating a strong work of art. What information is essential? What is otiose and for this reason distracting? And to leave out!

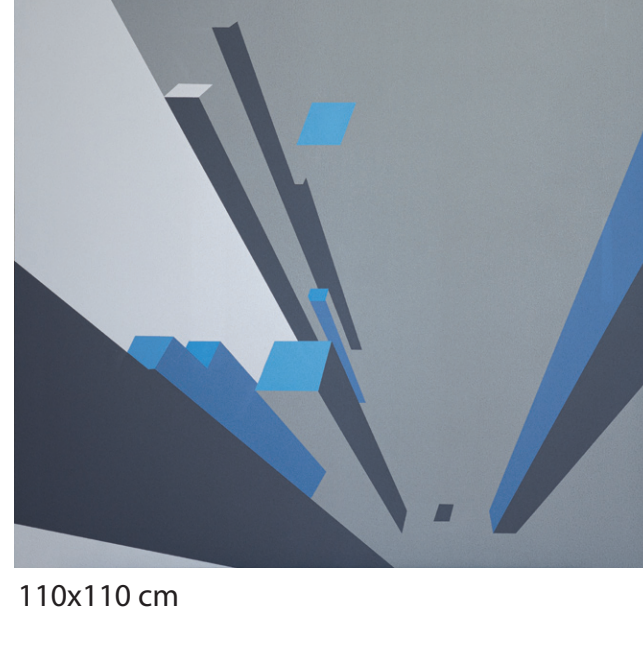
Continuing his further development as an artist Roland focused on experimenting with form and color. He consulted criticsasters to discuss his work. These consultants encouraged him to focus on the strength of an image. What makes an image so strong? What is my contribution in this? Can I add anything?

Roland realized his own style of art and representation, his own 'signature'. Every artwork is solitary and by this authentic. But yet recognizable as a real 'Roland Cuppers'. What makes his artworks so recognizable?

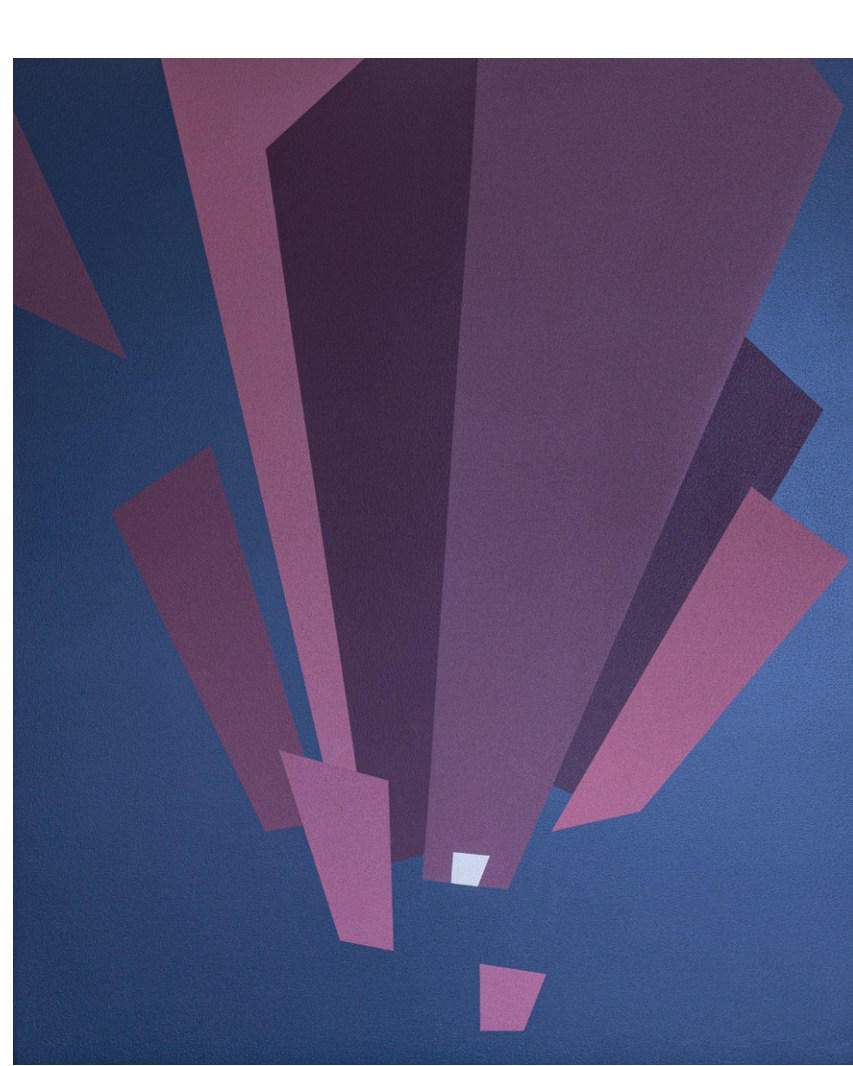
All his works are strong, tensely, demanding attention! You want to know what you are looking at... Straight lines, delimited frames. Nothing unessential in it, minimalistic. Roland produces his colors and paint himself, based on industrial materials. This results in homogeneous spray-paints of monumental colors and therefore powerful! The paints are applied without a 'touch' on flat mdf, producing a composite image in which some colors are reflected and other are not. This causes extra tone in the artworks.



110x110 cm



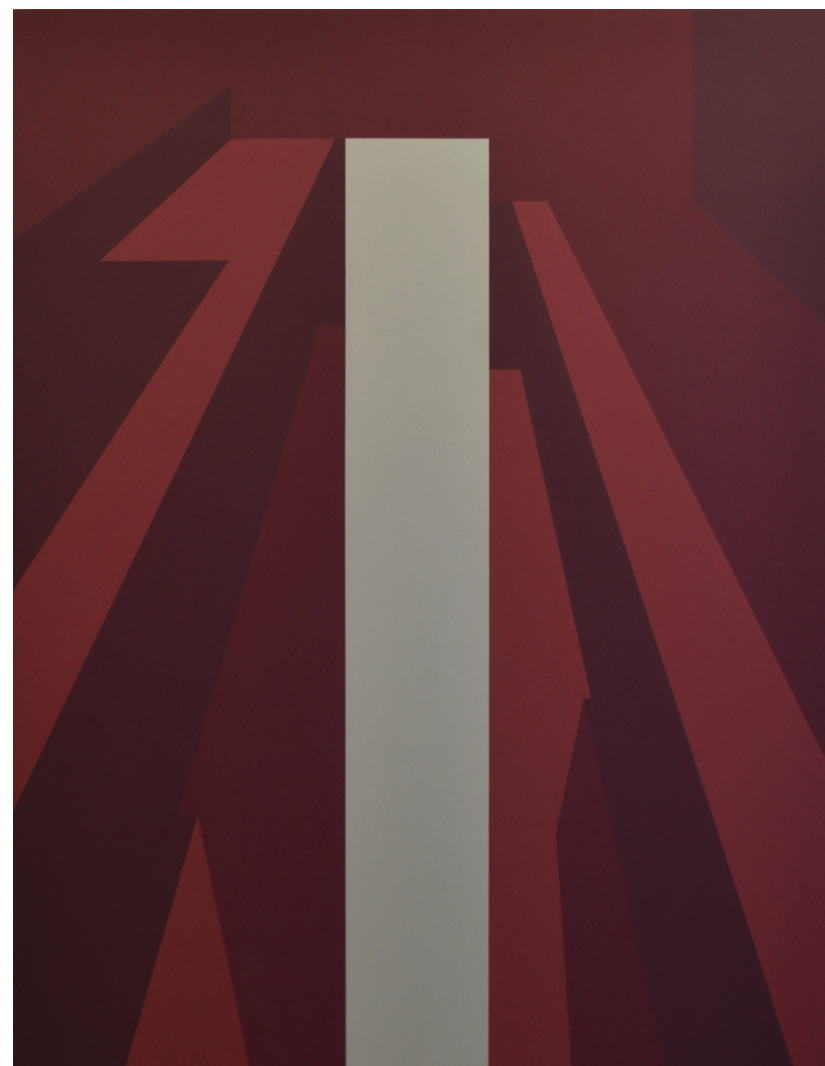
110x110 cm



80x90 cm



122x80 cm



122x80 cm

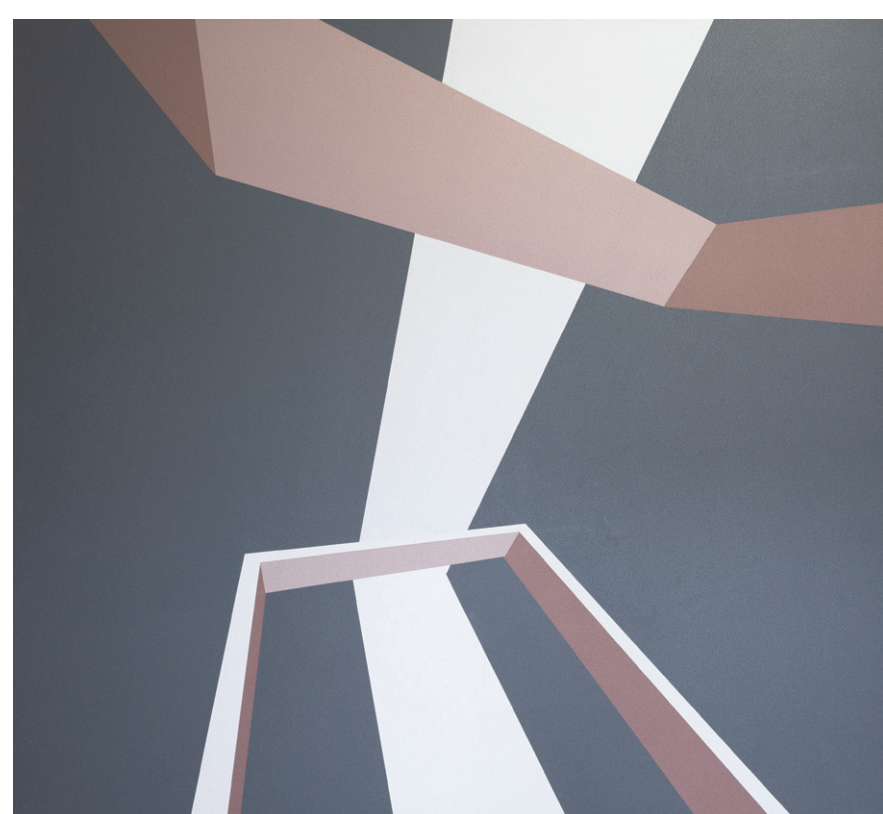
The artwork itself needs action from its viewer... what am I looking at? What is it actually? First it is Roland Cuppers himself searching the essence in his observations of buildings, pictures, constructions or else that inspires him. Always asking himself this one question: what is it that I am looking at? Next is to fulfill his process of leaving out all elements that are not necessary, to end in its core... and build his artwork. But when you think this is the end of the journey you are false... Roland adds some small element to the image to develop tension or even confusion. At this very point, you are looking at his artwork.

By studying the work of Roland Cuppers your brain is asked to interpret what you see. By leaving out as much information as needed, Roland emphasizes you to bring in your own ideas and in the same time questioning yourself... The added element by Roland makes you search for your own perspective: where am I relation to what I see? In front? Above? Behind? Close or far? The journey of the brain is exclusive and individual for every viewer and every mind.

And the next time you look at the same image you discover something you overlooked the first time... This makes the work of Roland Cuppers fascinating.

So, Roland Cuppers wants us to observe with attention, seeing what is essential. In a period of time and a community that fades away from this essence. The unnecessary seems to be more important compared to the substantial...

In his artworks Roland shows us that we need to observe critically and that is it is important to ask ourselves whether we really see what we are looking at...



122x122 cm



60x65 cm



ROLAND CUPPERS

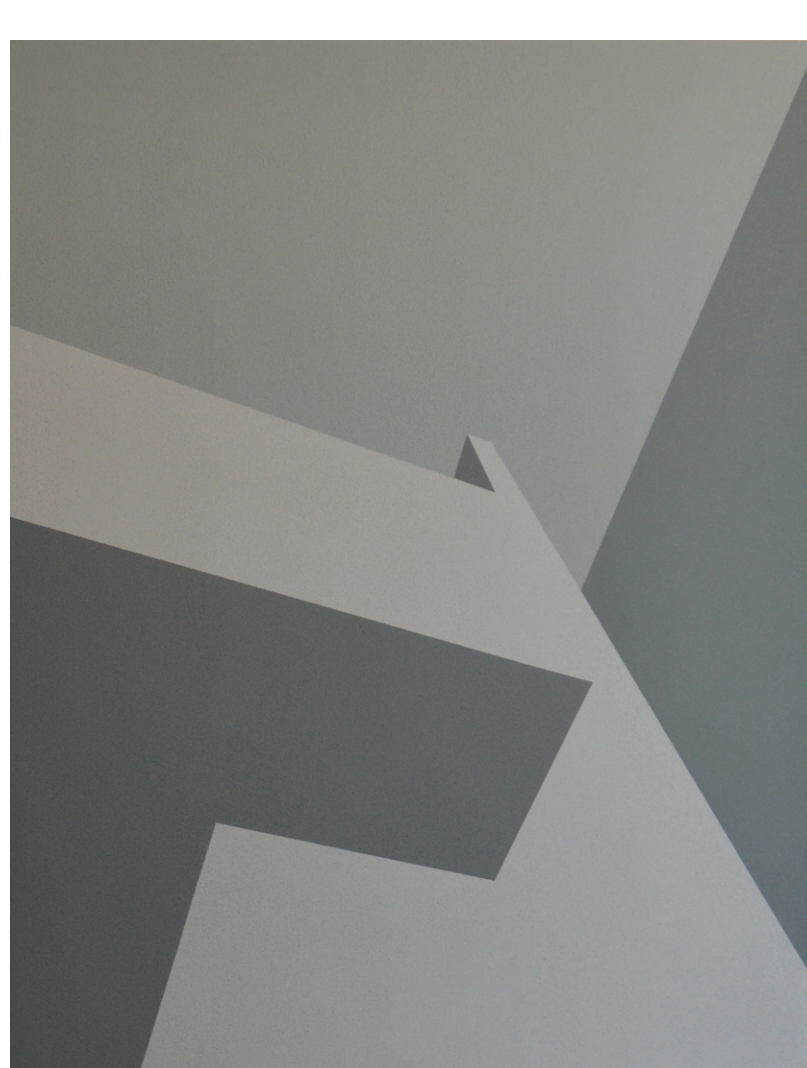
Roland Cuppers in a limited overview..

Born June 3rd 1970 in Eindhoven, Netherlands

Education:
Maastricht Art Academy, 1984 – 1994 (Cum Laude)
In 1995 allowed a starting stipend

Exhibitions:
1996 KunstRAI, Amsterdam
1997 Art 88 Gallery, Nuenen (Solo Exhibition)
1999 Peninsula Daily, Eindhoven (Solo Exhibition)
2001 Art 88 Gallery, Nuenen (Solo Exhibition)
2001 Van Abbe Museum, Eindhoven
2002 Krabbedans, Eindhoven
2003 TAC, Eindhoven
2006 Gallery de Kort, Bladel (Solo Exhibition)
2012 Gallery van Rijnsingen, Eindhoven (Solo Exhibition)
2013 Gallery Element, Waalre (Solo Exhibition)
2014 Hilvaria Studios, Hilvarenbeek
2019 Gallery de Kunstkamer, Hogeloon (Solo Exhibition)

Artworks sold to many private and business collectors.



65x100 cm